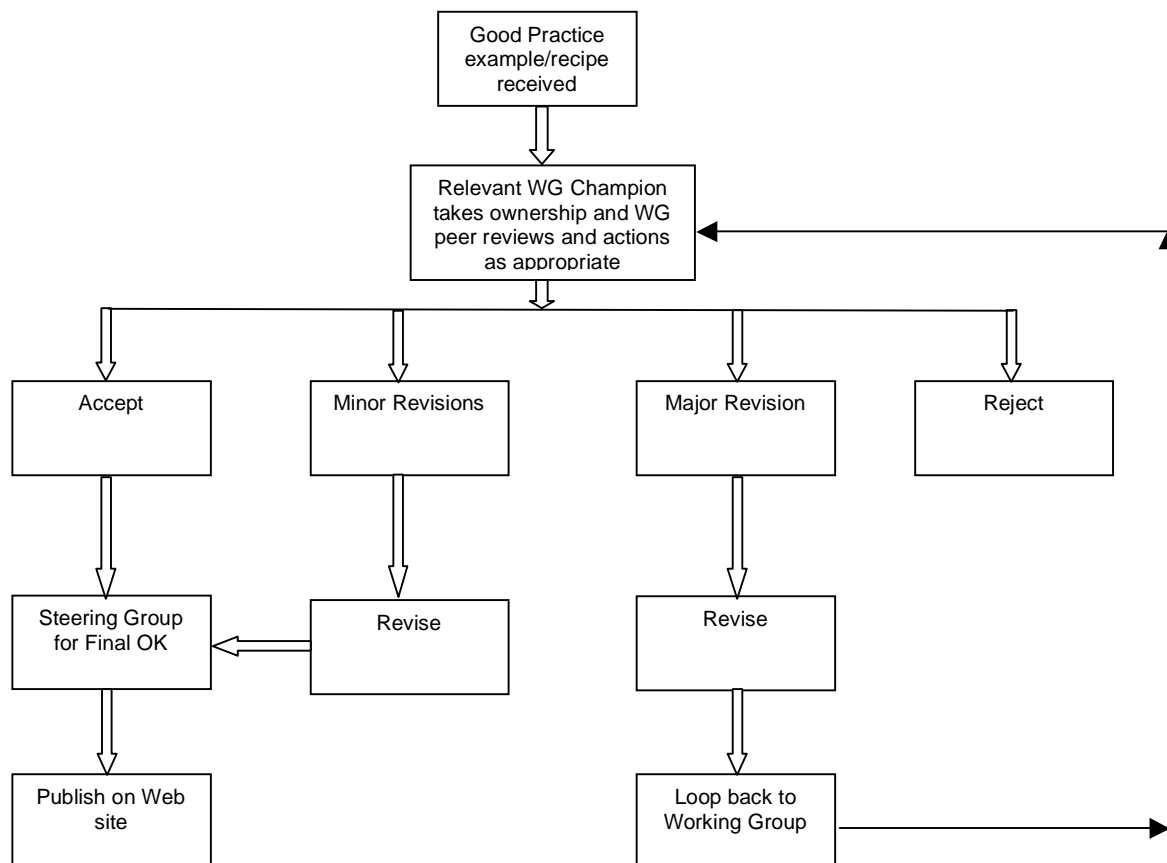


Good Practice Model/Recipe – Editorial Process

This process based on the premise that new Recipes will be submitted either through the Web Site to the Working Groups or to the members of, the WGs directly.



Editorial Guidance - principles

- Good Practice Models should be co-created by Working Groups. The formative and collective knowledge of the WG/Community of Practice is the added value. The extent of WG editing depends on how closely the model adheres to the criteria and guidance provided with the template, and how effectively the model contributes to improvement in their process area.
- Working groups should seek an external, non-HEI review/validation (partner or client/user) of their Good Practice models.
- Working Groups will need to satisfy themselves that the Good Practice model that they are reviewing meets the Criteria for inclusion.
- Working Groups ensure that the specific questions in the guidance and on the Template have been addressed
- Good Practice Models are the core product. Case Studies¹ are welcome but primarily as a source material for the WGs at this stage. If appropriate they can be separate documents or links referenced in the GP Template.

In case of any queries please contact your Working Group facilitator in the first instance or Rob Whieldon (r.whieldon@leeds.ac.uk).

¹ At a later stage in the programme (e.late 2006, 2007) case studies (to a template) will be invited but the emphasis is on the models/recipes for now